



DIMENSIONS

# Psychedelics-Focused Hospitality Investment Opportunity



SERIES B – PRIVATE PLACEMENT

# Disclaimer

This presentation (the “Presentation”) of Dimensions Health Centres (the “Company”) is current as of October 31, 2022, except as otherwise provided herein. It is information in a summary form and does not purport to be complete. It is not intended to be relied upon as advice to investors or potential investors and does not take into account the investment objectives, financial situation or needs of any particular investor. An investment in the Company is speculative and involves substantial risk and is only suitable for investors that are able to bear the risk of losing their entire investment. All the information contained in this Presentation is for preliminary discussion purposes only. Final terms and conditions may change without notice and are subject to further discussion and negotiations. No representation or warranty, express or implied, is made or given by or on behalf of the Company or any of its affiliates, directors, officers or employees as to the accuracy, completeness or fairness of the information or opinions contained in this Presentation and no responsibility or liability is accepted by any person for such information or opinions. The Company does not undertake or agree to update this Presentation or to correct any inaccuracies in, or omissions from, this Presentation that may become apparent. Persons receiving or reviewing this Presentation should not rely upon it as a complete overview of the business of the Company and should rely on their own investigation and due diligence. No person has been authorized to give any information or make any representations other than those contained in this Presentation and, if given and/or made, such information or representations must not be relied upon as having been so authorized. The contents of this Presentation are not to be construed as legal, financial or tax advice. You should consult your tax or legal advisor about the information contained in this Presentation. Certain statements in this Presentation may constitute forward-looking information within the meaning of applicable securities laws. Generally, forward-looking information can be identified by the use of forward-looking terminology such as “expects,” “believes,” “anticipates,” “budget,” “scheduled,” “estimates,” “forecasts,” “intends,” “plans,” and variations of such words and phrases, or by statements that certain actions, events or results “may,” “will,” “could,” “would,” or “might,” “be taken,” “occur,” or “be achieved.” Certain statements, beliefs and opinions in this Presentation (including those contained in graphs, tables and charts), which reflect the Company’s or, as appropriate, the Company’s directors’ current expectations and projections about future events, constitute forward-looking information. Forward-looking information contained in this Presentation is based on certain assumptions regarding, among other things, expected growth, results of operations, performance, industry trends and growth opportunities. Forward-looking information contained in this Presentation includes: statements in respect of expected developments in the legal framework for psychedelics by the legal and regulatory authorities in Canada, anticipated revenue projections, and the establishment of the Company’s proposed bed treatment centres, as well as expected occupancy over periods of time. While revenue projections and proposed expansion, including the establishment of bed treatment centres, are based on management’s business plans, assumptions related to the legal framework of psychedelics, and specifically psilocybin and MDMA, are based on management’s observation of general trends in Canadian society, making them harder to quantify and predict than those matters that management may have control or involvement in. While management considers these assumptions to be reasonable, based on information available on the date hereof, they may prove to be incorrect. By their nature, forward-looking statements involve a number of risks other factors include: (i) future legislative and regulatory developments including with respect to the legal treatment of psychedelics; (ii) the Company’s ability to implement and fulfill its business strategies (including expansion and acquisition of real property in a variety of jurisdictions) in accordance with its mission statement; (iii) the Company’s ability to establish research and treatment facilities and maintain programs therein; (iv) the willingness and ability of patients to enrol in the Company’s programs; (v) the availability of financing and the potential inability to access sufficient capital from internal and external sources, and/or inability to access sufficient capital on favourable terms; (vi) the Company’s ability to retain professionals, including appropriately trained medical personnel, to provide services in connection with its business; (vii) force majeure events; (viii) general economic conditions; (ix) adverse industry events; (x) marketing costs; (xi) loss of potential markets; (xii) tax and regulatory matters; and (xiii) competition. The foregoing risks, uncertainties and assumptions could cause actual results or events to differ materially from those expressed or implied by the forward-looking statements. These risks, uncertainties and factors are not intended to be exhaustive. These risks, uncertainties and assumptions could adversely affect the outcome and financial effects of the plans and events described herein.

Forward-looking statements contained in this Presentation regarding past trends or activities should not be taken as a representation that such trends or activities will continue in the future. The Company does not undertake any obligation to update or revise any forward-looking statements, whether as a result of new information, future events or otherwise. In this Presentation, and during the course of discussions related to the evaluation of any prospective investment in the Company (the “Purpose”), the Company may disclose certain information which it deems proprietary or confidential, and may include, discoveries, ideas, concepts, know-how, techniques, designs, specifications, drawings, blueprints, diagrams, flow charts, data, costs, prices, marketing plans, goals, sales figures, revenue, profits, and other technical, financial or business information respecting existing or planned product or service offerings, including products and services to be developed or marketed by the Company (the “Information”). At all times, Information shall be deemed confidential and proprietary and subject to the restricted use of evaluating the business of the Company for the Purpose and distribution shall be prohibited, other than as provided herein. This Presentation includes financial outlook about the Company’s projected revenue, which is subject to the same assumptions, risk factors, limitations, and qualifications as set forth in the above paragraphs. Revenue estimates contained in this Presentation were made by management and are provided for the purpose of providing readers with an understanding of management’s expectations with respect to the potential financial performance of the Company, assuming that certain business objectives and milestones are met. Readers are cautioned that the financial outlook contained in this document should not be used for purposes other than for which it is disclosed herein. Information contained herein includes statements in respect of expected developments in the legal framework for psychedelics by the legal and regulatory authorities in Canada, anticipated revenue projections, and the establishment of the Company’s proposed bed treatment centres as well as expected occupancy. By your acceptance of this Presentation, if delivered, you and any person reviewing this Presentation agrees not to distribute; copy; reproduce; transmit; make available; or condone any of the foregoing, without the prior written consent of the Company. Any unauthorized use of this Presentation is strictly prohibited.

**No securities regulatory authority has expressed an opinion about these securities, and it is an offence to claim otherwise.**

# Executive Summary

## Opportunity to be an early investor in the growing psychedelic-assisted therapy and hospitality space

### Growth in Psychedelics, Psychedelic Retreats + Psychedelic-Assisted Therapy

- Increasing access to and demand for revolutionary new treatments has led to growth in market size, supporting dozens of Dimensions destinations.
- Estimated annual economic burden associated with psychedelic-treatable mental health disorders in the US is \$1.4 trillion.
- New studies and publications on psychedelics are released daily, contributing to the growth in research and public attention around the world.
- Broad awareness of the benefits of psychedelics is becoming mainstream through content disseminated through Netflix, podcasts, and celebrity influencers, among others.
- Emerging research has established that psychedelic-assisted treatment can improve conditions such as PTSD, depression and addiction. Also, there is a widening appreciation for its ability to foster self-betterment, improving the professional and personal lives of people across the population.
- Regulatory approvals for various psychedelic medicines occurring across Canada and the U.S. are expected to accelerate.
- Wellness travel is a \$500 Billion global market, with CAGR of 25% expected through 2026.
- International psychedelic-and wellness-focused retreat visits on the rise in places in the Americas and Europe.

### Distinguished + differentiated team positioned to scale

- Industry-leading team that combines an extensive track record in the clinical and medical fields with best-in-class hospitality know-how.
- An innovative, research-driven approach to retreats that combines plant medicine, neuroscience and comprehensive health and safety protocols in a luxury, full-service hospitality environment.
- Best-in-class programming and an extensive training and development model.
- Opportunity to create the first to market high-end psychedelic-assisted therapy hospitality brand.

### Solid operational + financial metrics creating value over time

- Unique opportunity for significant upside through ownership in the management company and brand while also protecting the downside through ownership in the existing first location.
- Conservative base case rollout of 10 locations (one owned and nine managed) over seven years yields projected IRR<sup>1</sup> on a consolidated basis of **35-40%** and equity multiple of **5-7x** on invested capital.
- Consolidated Dimensions operating company (Dimensions Retreats) EBITDA margins of **67.9%** in year seven<sup>2</sup> due to asset light model.
- Downside scenario with no additional locations and a sale of the single owned property yields a 1.2 to 1.4x MOIC.
- Upside would come from the opening of new markets, such as the U.S. The Biden administration has suggested that psychedelics could be legalized before the end of 2024.
- Licensing/consulting revenue from our psychedelic-assisted therapy program would represent further upside.

<sup>1</sup> Returns are presented gross of transaction expenses and equity placement fees.

<sup>2</sup> Includes operating fees of 10 locations plus the net operating income (NOI) of Algonquin Highlands property (Canada) owned by Dimensions operating company (Dimensions Retreats).

# Who We Are

Dimensions is a psychedelic-assisted therapy and wellness focused hospitality company that offers treatments informed by cutting-edge developments in neuroscience and psychedelics in natural settings to create a balanced approach to improving mental health and well-being



Dimensions respects the lineage of plant medicine and is committed to supporting Indigenous and local communities within the Western Hemisphere.

Dimensions currently has one retreat property operating in the Algonquin Highlands outside of Toronto and is expanding throughout North America and Latin America.

Dimensions is dedicated to a very strong clinical discipline.

Dimensions is committed to best practices and provides funding to the Faculty of Health Sciences at Queen's University to establish a collaborative space for research and innovation in the field of psychedelics.



# Differentiators

Dimensions' CEO was the founder/CEO of the largest private network of residential/outpatient treatment providers in Canada

- Led M+A of Canada's top-three treatment centres to form the largest entity of centres and outpatient clinics.
- Increased bed count 3x over his tenure.
- Exit was at 6x after five-year period.
- Served more than 35,000 patients in a 10-year period.
- Oversaw more veterans/patients than any other senior exec/CEO over the period in Canada.
- Prior to his career in health care, Chris was a Partner at Bain & Company where he consulted with CEOs on driving growth and profitability across a wide variety of sectors. Chris also collaborated with Bain Capital, primarily in a Private Equity context.

Dimensions' Retreat programming was developed over seven months, with a total investment of nearly \$1 million (CAD), in conjunction with DreamLab, an independent health sciences laboratory

- DreamLab provided research, knowledge synthesis, education, program development, trial design methodologies, and evidence-based protocols for the beneficial use of psychedelics and other entheogenic modalities.
- DreamLab was staffed by a collaborative team with expertise in psychedelics, neuroscience and therapeutic practices including MDs, PhDs, Master's level researchers, psychotherapists, nutritionists, wellness providers, and Plant Elders to design and implement Dimensions programs.
- DreamLab program development process for Dimensions was a participatory, evidence-informed and iterative process structured in six stages: discovery, declaration, synthesis, confirmation, evaluation, and adaptation + implementation.

Dimensions' hiring and on-boarding program forms the key DNA of the company. It will provide competitive advantage and is a major differentiator for the program and company

- Hiring and training program allows for quality control, brand integrity and team scalability across multiple locations.
- All staff trained for several months prior to opening.
- Training includes psychotherapists and wellness practitioners (e.g., HR, somatic, body field, diversity/inclusion training).
- Dimensions maintains a database of trained therapists in multiple locations with experience in psychedelic-assisted therapy who have expressed interest in joining the Dimensions team.

# Initial Focus on Veterans

Veterans were integral to the legalization of cannabis in Canada in 2018. They have similarly advocated for psilocybin as Health Canada reviews its status as a controlled substance

- Dimensions has a partnership with the largest health services company for veterans in Canada and has applied to Veterans Affairs Canada to provide Retreat programs for veterans covered by VAC insurance. Final approval expected within the next two to three months.
- Veterans are quite comfortable with a treatment program that uses cannabis and many may prefer cannabis to other options in the longer term.
- This represents a critical 'bridge to psychedelics' for Dimensions, since veterans could quickly take up 50% of our occupancy in the first few years.
- All veteran participants have been enthusiastic about the program, stating that "this is exactly what veterans need." In fact, some participants found cannabis to be a more powerful part of the program than other experiences with psychedelics, such as psilocybin.
- This service partnership is a critical advantage and it positions Dimensions to be the leader in programming for veterans in Canada.
- Dimensions has already started conversations about similar programming in other countries around the world.
- Veterans around the world (including the U.S.) are also driving the adoption of psychedelic-assisted therapy. Our Canadian experience will position us well as these market opportunities arise.



# Market Opportunity

Build a branded psychedelic and wellness hospitality platform that resides at the intersection of three significant lifestyle trends

## Health + Wellness

- Proactive approaches to health care are growing vs reactive health care.
- Self-betterment and mental health are expected to grow even faster post-pandemic.
- Already a \$1 trillion industry worldwide.



## The Re-emergence of Psychedelics

- Top-five investment trend over the past three years.
- Clinical effectiveness has potential to supplant traditional medications.
- Traditional treatment is too often ineffective.
- Residential treatment/retreats is already a \$20 billion USD-industry in North America.
- The US is preparing for FDA approval of psychedelic-assisted therapies using MDMA and psilocybin within two years.



## Experiential/Regenerative Travel

- Regenerative or experiential travel is a trend that started in earnest after the 2008 financial crisis.
- Wellness travel is a \$500 billion market globally, with CAGR of 25% expected through 2026.
- The retreat/residential treatment approach is a proven business model.

# First Year Accomplishments (2021-2022)

## Acquisition of 1<sup>st</sup> Retreat Property

---

- 40-acre property on Maple Lake in the Algonquin Highlands.
- Phase 1 construction plan complete.
- Met 'pre-opening' target of summer 2022.

## Completion of Management Team

---

- Chief Medical Officer.
- Managing Director, Hospitality.
- Chief Financial Officer.
- Chief Clinical Officer.
- Managing Director, People + Corporate Leadership Programs.
- Director, Marketing + Communications.
- Director, Information Technology.

## Policy Agenda/Path to Legalization

---

- Establishment of the Dimensions Health Research Collaborative with Queen's University.
- Queen's is positioned to become the leader in research and policy in the psychedelic space in Canada.
- Well positioned to anticipate policy agenda.

## Branding and Communications

---

- Completion of brand-building exercise.
- Initiation of integrated website and client portal (online therapeutic assistance).
- Emphasis on external communication and brand building in both psychedelic and travel spaces.

## Establishing Corporate Governance

---

- Active committees in governance, audit and people and compensation.
- Engaged Board of Directors.



# Where We're Going

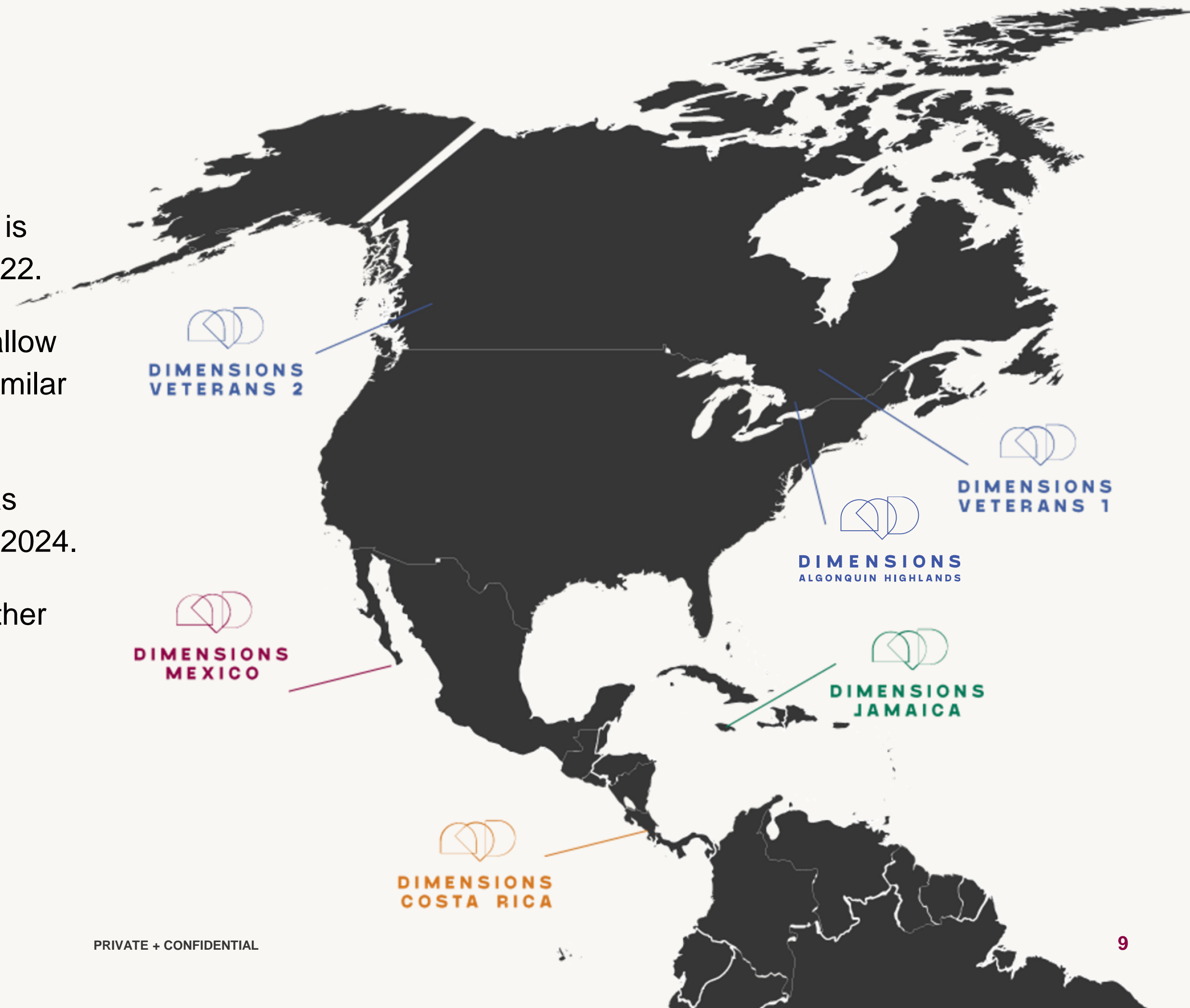
Dimensions is moving quickly

The Ontario retreat property at Algonquin Highlands is well under way and operational, as of September 2022.

Strong advancements with our veterans' partner to allow for fully subsidized stays for Canadian veterans; a similar veterans strategy to be rolled out in U.S. market.

Next step is to expand services in Canada, as well as internationally, with additional locations in 2023 and 2024.

Dimensions has already identified opportunities in other locations including the Americas and Europe and is currently in discussions with local partners.



# Retreat Approach

Dimensions is about combining luxurious destination retreats with clinically focused and research based psychedelic assisted therapy

At a Dimensions Retreat the mind, body, and spirit are prepared to get the most out of the Ceremony experience. In addition to psychotherapy, guests are supported by more than a dozen modalities, including: breathwork, yoga, and sound and light therapy.

Setting is critical: Dimensions has developed beautiful natural environments with minimalist architecture and interior design to enhance the experience.

- State-of-the-art technology to support the guest experience.
- Food designed to foster well-being, nourishing body and spirit, cleansing and preparing the body for Ceremony.
- Leisure activities to make the most of the environment.



**A SAFE PLACE  
TO RESET AND  
TO CONNECT  
TO ONESELF,  
OTHERS AND  
NATURE.**

# Our Retreat Program

## Dimensions offers psychedelic Retreats, combining Plant Medicines with cutting-edge therapies

Dimensions' elevated, natural settings are meant to calm the nervous system and expand consciousness; resetting physical, emotional and behavioural patterns to help overcome the disorders/stressors of modern life.

Recent research with Plant Medicines, particularly psilocybin, have demonstrated great promise across the spectrum of disorders.

Dimensions is positioned at the leading edge of putting this research into practice.

At Dimensions, programs are designed for self-betterment: expanding consciousness, promoting connection and addressing the stressors of modern living.

Psychedelics used during Ceremony vary by jurisdiction and retreat program and may include, for example, cannabis, psilocybin, ayahuasca.

Our collaboration with Queen's University ensures rigour in our approach. Clinical and research trials also provide the opportunity for early access to psilocybin in Canada prior to decriminalization and, or legalization.



### THERAPEUTIC RETREATS

- Anxiety
- Depression
- Substance use disorder
- Traumatic brain injury\*
- PTSD\*

### SELF-BETTERMENT RETREATS

- Post-COVID reconnection
- Couples' retreats
- Spiritual connection
- Conscious evolution
- Expanding consciousness
- Physical and/or emotional detox
- Mind/body connection

\*including clinical trials

All programs are curated, evidence-based, integrated and sequenced to provide the conditions for optimal healing.

# Guest Segments + Programs

Varied range of target use cases provides for a diversified customer base

TARGET GUEST	PROGRAM	DESCRIPTION
Self-Betterment	ASCEND	The individual, couple or friend group travelling to leave the everyday behind and begin their journey to self-betterment.
Clinical	ELEVATE	Guests (including veterans and others) with diagnosable conditions seeking an integrative approach moving from surviving to thriving, using psychedelic-assisted therapy.
Practitioner/Health-Care Professionals	EVOLVE	Those seeking a program to enrich their knowledge with relevant, in-depth training in evidence-based psychedelic-assisted therapies, techniques and methods.
Leadership	ACTUATE	Group management Retreats where guests journey together toward common goals and intentions with a personalized program tailored to their organization and leadership. Psychedelics are optional.
Research-Based	DISCOVER	A clinical research partnership supporting the study of psychedelics, delivered in collaboration with Queen's University (The Dimensions Health Research Collaborative).



# The Program Experience

Pursuant to our Dreamlab program guidelines and protocols, Retreats comprise three main stages

## 1 BEFORE ARRIVAL

**Discovery:** Assess guest suitability and readiness for program. Gain mutual understanding of Retreat potential through facilitated pre-arrival interactions.

**Grounding:** Developing a curated program for each guest.

## 2 THE RETREAT EXPERIENCE

**Preparation:** Exploring complementary modalities, establishing ceremonial path.

**Somatic/Relational Experiencing:** Establishing connection to surroundings, therapists, fellow guests.

**Ceremony:** Plant-based or otherwise, ritual of healing.

## 3 POST-RETREAT

**Integration:** Development of a guest plan to integrate their Retreat experience in subsequent months.

**Dimensions Community:** A guest portal application keeps participants in touch with Dimensions, the Dimensions community and the broader psychedelic network.

THE ENTIRE GUEST  
JOURNEY  
IS GUIDED BY  
PSYCHOTHERAPISTS  
AND OTHER TRAINED  
PROFESSIONALS.



# Testimonials

## Guests, Hosts + Hospitality Staff

“I attended Dimensions with an open mind, though admittedly a mind raised according to traditional western medical science. The one-on-one breathwork blew me away. At the end of it, my mind was more at peace than I’ve ever experienced before.

I held my breath for more than four minutes! I am in awe. What an extraordinary gift.”

**DAVID S., AUGUST 2022**

“The communal vibe at Dimensions ensured everyone I met quickly felt like an old friend. From the amazing meals (hats off to the chef!) to the group campfires and the sound bath – which was like nothing I’d ever imagined – everything was perfect. My entire Dimensions experience was the epitome of “Zen”; I would do it over and over again.”

**JENNIFER R., AUGUST 2022**

“Imagine a workplace, and you are doing your dream job with the most loving co-workers, a positive environment and all the resources to help you learn and grow on a spiritual and professional level. The workplace is Dimensions. It is the company that is allowing me to fulfill my soul’s purpose.

**KAYLA B., LODGE HOST**

“Donald Currie’s patience and wisdom allow connection and quickly establish trust. The location, accommodations, amazing food, and friendly staff contribute to the safe space Donald creates. I loved every second and will be back.”

**JOYANNE P., AUGUST 2022**

“Working for Dimensions is not "one dimensional." It is being part of something greater, working as a team, following our "why," to not only help our guests, but to help each other be better as well. I have never worked in an environment based on a foundation of safety and compassion; other places preach those values - Dimensions is these values. To be yourself and to not only feel, but to know you are welcome and encouraged to be authentic is something I will never forget. I am truly a better person for my time working with my family at Dimensions.”

**TOM Y., KITCHEN**

“With the help of Dimensions’ genuine, caring experts, my results were profound. I hope to make this an annual experience for the maintenance of my mental health.”

**BRUCE S., AUGUST 2022**

“Dimensions is a tune-up for the heart, mind and body. You get what you need, not necessarily what you thought you wanted. It's a true gift to yourself. A big thank you to the wonderful clinicians and staff!”

**STEPH G., AUGUST 2022**

“My stay at Dimensions Algonquin Highlands was deeply nourishing, peaceful and awe-inspiring. As soon as I arrived, I felt instantly supported and cared for by the incredible team there, who ensure your every need is met. My wellness journey was thoughtfully planned and personalized, allowing me to fully disconnect and reconnect with both myself and nature. I have immense gratitude toward the community Dimensions is creating — its retreat experience is one of the greatest investments I’ve made toward personal growth, well-being and healing.”

**SHANNAN W., AUGUST 2022**

# Digital Community

## The Dimensions experience and relationship goes beyond the Retreat stage

Dimensions is developing a guest portal application that allows the clinical and hospitality teams to stay in touch – ideally before a guest's next Retreat.

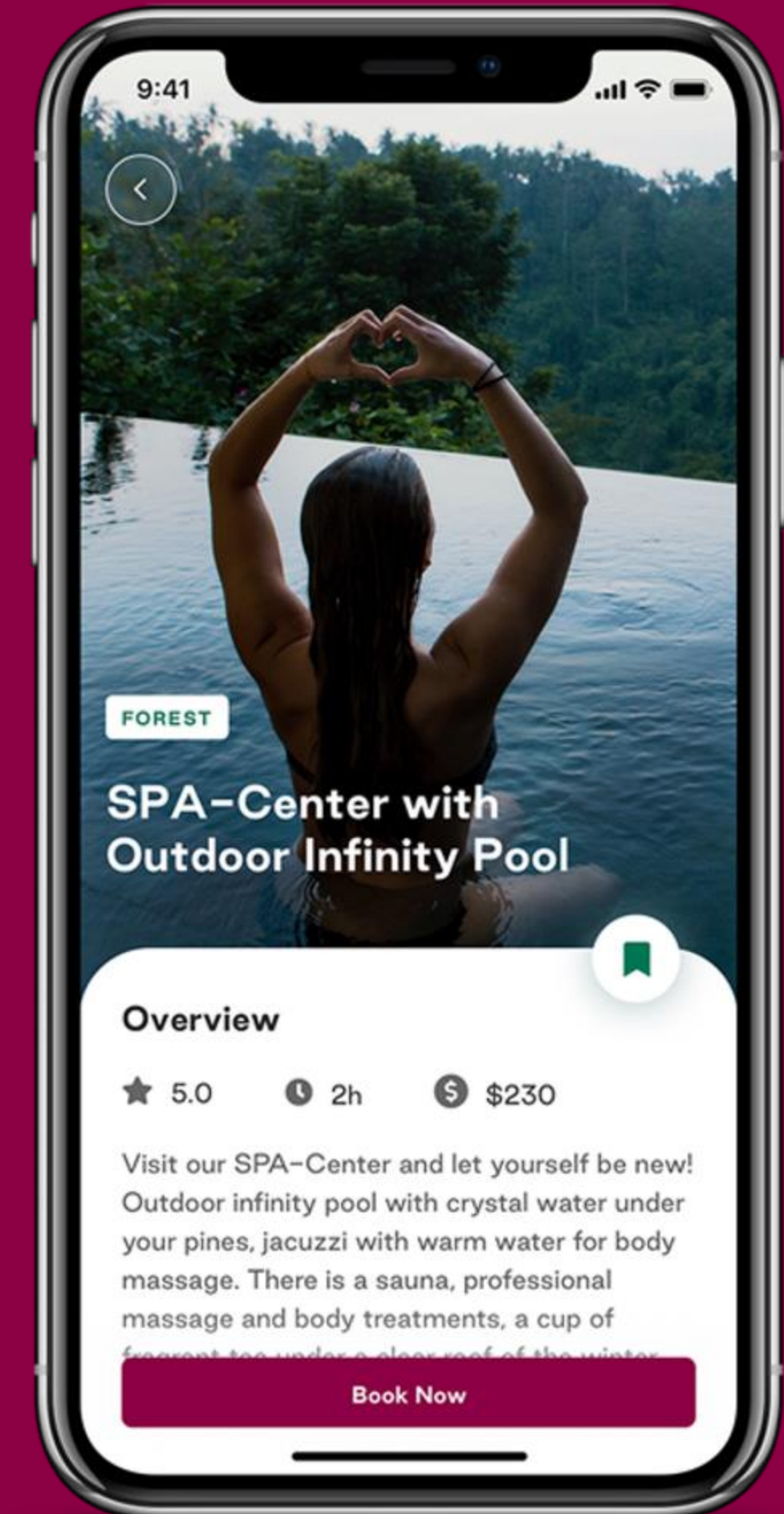
The guest portal is a 'wrap around' technology designed to integrate existing applications that enhance an aftercare experience, supported with some Dimensions-specific elements.

Designed to be a core retention/loyalty mechanism, the app is focused on two things:

- Guiding the Integration portion of the Retreat experience – technology supported, including live access to therapists.
- Building the guest/Dimensions relationship through depth of experience, broader information on trends in the psychedelic space and access to research.

Most importantly, the guest portal maintains the connection to guests and broadens ongoing community-building efforts.

An ever-expanding resource, Dimensions' goal is for the portal to be the main source of information on the psychedelic space for the whole Dimensions community.



# Investment Strategy + Fundraising Plan

Invest in an established and growing psychedelic-focused hospitality business

\$15.8 million CAD (~\$11.6 million USD) raised to date to complete Phase I of Algonquin Highlands.

Current raise of \$22.2 million CAD (~\$16 million USD) of growth capital to complete Phase II of Algonquin Highlands (to include additional lodging and common area amenities) and to provide working capital for the growth of the platform and management company.

Dimensions' operating company (Dimensions Retreats) is the owner of the Dimensions Algonquin Highlands facility.

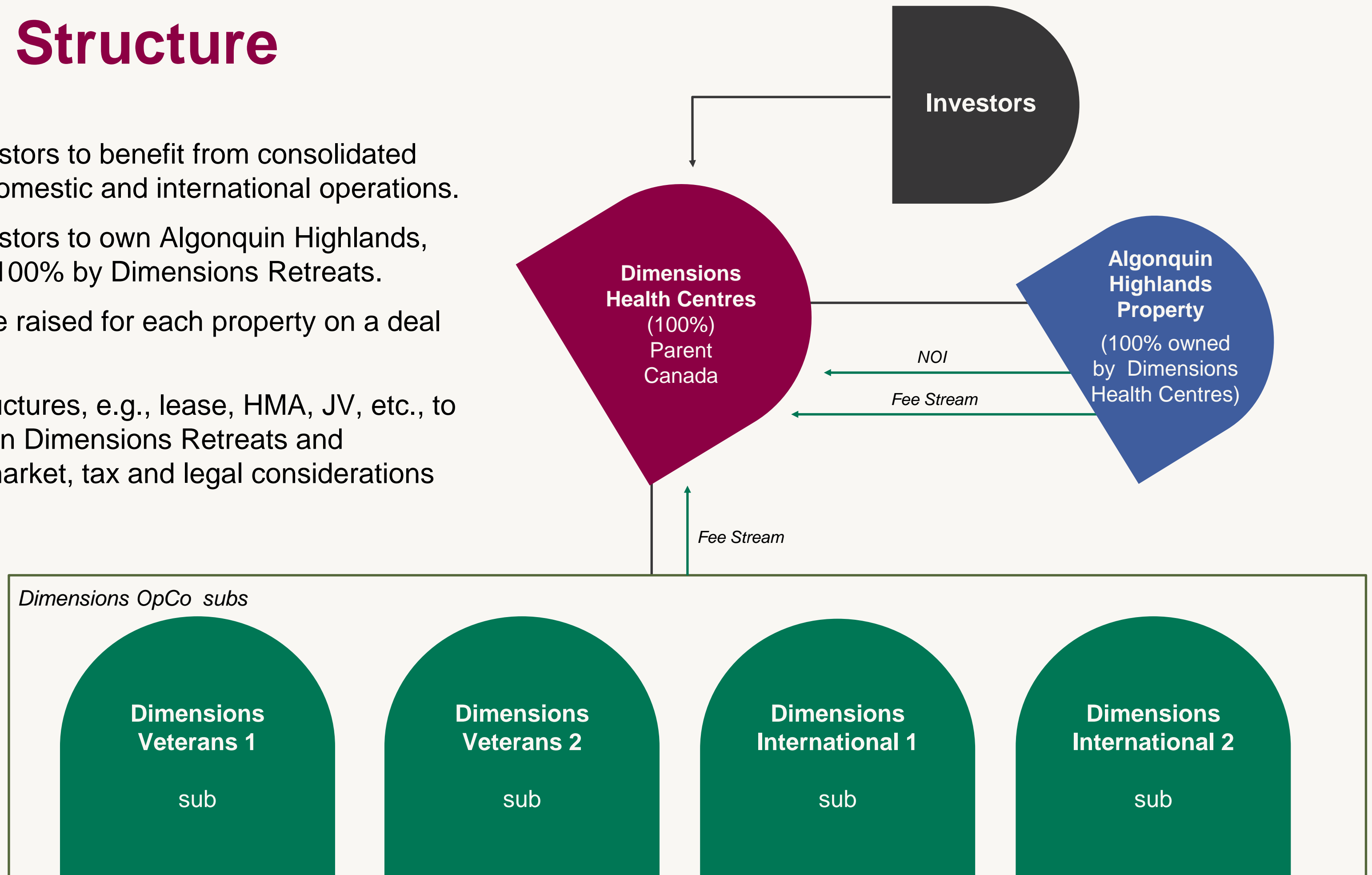
Execute expansion strategy for additional Canada-based facilities, as well as select, targeted locations in the Americas and Europe. Asset-light model is planned going forward.

Subsequent capital raises at property level via asset-by-asset capital raise or commingled fund.



# Investment Structure

- Existing and new Investors to benefit from consolidated fee streams from all domestic and international operations.
- Existing and new Investors to own Algonquin Highlands, as property is owned 100% by Dimensions Retreats.
- Additional capital to be raised for each property on a deal by deal or fund basis.
- Various economic structures, e.g., lease, HMA, JV, etc., to be considered between Dimensions Retreats and properties driven by market, tax and legal considerations of each jurisdiction.



# Risks

Dimensions is well positioned to mitigate potential business risks it may encounter

RISKS	MITIGANTS
Slower than expected path to psychedelic legalization	<ul style="list-style-type: none"><li>▪ Diversified use of different medicines and programs in multiple geographies.</li><li>▪ Alternative uses of retreat facilities e.g. wellness only.</li><li>▪ Work co-operatively with Health Canada to allow ‘research trial’ retreats.</li><li>▪ Offer ‘pop-up’ retreats to establish Dimensions’ presence in psychedelics (psilocybin Ceremony).</li></ul>
Capital/financing levels below expectations	<ul style="list-style-type: none"><li>▪ Modulation of capacity. Seek scale with lower capital intensity.</li><li>▪ Identify real estate/investment partners on project-by-project basis.</li></ul>
Competitive retreats	<ul style="list-style-type: none"><li>▪ Ongoing investment in programming and program development.</li><li>▪ Ensure ongoing focus on innovation, research, best practices and thought leadership</li></ul>
Supply of therapists	<ul style="list-style-type: none"><li>▪ Investment in industry-leading training programs to develop from within.</li><li>▪ Backlog of inquiries from potential therapists interested in working with Dimensions.</li></ul>
Reduced roll out	<ul style="list-style-type: none"><li>▪ In the event of a reduced roll out (vs. base case of 10), returns are still very attractive.</li><li>▪ Current conversations suggest short term viability of a six-property roll out, yielding IRR of 27% and a multiple of 3.6x.</li></ul>

# Dimensions Algonquin Highlands



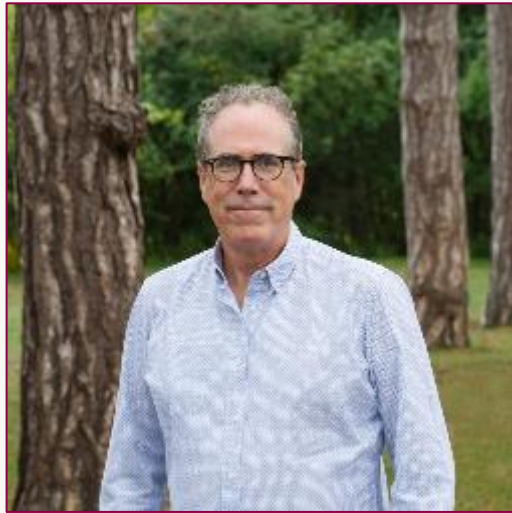
Lot Area:	117,554 sqm
Gross GFA:	2,110 sqm
Paved Area:	7,323 sqm
Landscaped/Forested Area:	108,121 sqm
Staff Parking:	26
Visitor Parking:	44
Number of Cabins:	Phase 1: 17; Phase 2: 36
Proposed Trails:	1.2 km
Amenities:	Main Lodge, fire pit, Ceremony facility
Activities offered:	Massage, reiki, light therapy, meditation, sound baths, hiking, paddle boarding, kayaking, ice fishing, ice skating, fireside time, acupuncture, sauna and more.
Number of staff:	28



**DIMENSIONS**  
ALGONQUIN HIGHLANDS



# Dimensions Management Team



**Christopher Dawson**  
Co-founder + Chief  
Executive Officer

Chris was the Founder and CEO of Edgewood Health Network, the largest private network of residential/ outpatient treatment providers in Canada. He led the merger and acquisition of Canada's top three treatment centres to form Canada's largest entity of treatment centres and outpatient clinics. Prior to his career in health care, Chris was a Partner at Bain & Company where he consulted with CEOs on driving growth and profitability across a wide variety of sectors. Chris also collaborated with Bain Capital, primarily in a Private Equity context.



**Andrew Galloway**  
Co-founder + Chief  
Operating Officer

Andrew is the former National Director of Edgewood Health Network, where he led 10 outpatient centres. Andrew is the former VP of Greenestone Muskoka Alcohol & Drug Treatment Centre, and has 14 years of experience working directly for the NHL/NHLPA Substance Abuse Program.



**Linda Griffin**  
Managing Director,  
Hospitality

Linda is a global hotelier with more than 30 years of international experience in the hospitality industry, including 26 years with Hilton Hotels, and most recently with Jumeirah Hotels in the United Arab Emirates, where she focused on the development of a luxury resort in Abu Dhabi.



**Doug Biggs**  
Chief Financial Officer

Doug has more than 25 years of experience as a leader in the addiction and mental health space. Doug has also served in financial leadership roles within the commercial/retail real estate space, as well as in the technology startup space with a company focused on IoT and wireless connectivity.



**Joanne Thomsen**  
Managing Director,  
People + Corporate  
Leadership Programs

Joanne is a seasoned Human Resource leader with experience across multiple sectors, including private, public and not-for-profit sectors. She helped build the MaRS Discovery District Innovation hub and more recently worked in a mission driven, high growth e-commerce company.

She is passionate about helping organizations, teams and individuals realize their potential. She completed training in coaching and leadership through the Co-Active Training Institute and has had training in relational somatic therapy.

# Dimensions Clinical Team + Research



**Douglas (DJ) Cook**  
Chief Medical Officer

Dr. D.J. Cook is Chair and Head of Neurosurgery at Queen's University in Kingston, Ontario. Cook practises cerebrovascular and skull base neurosurgery at Kingston Health Sciences Centre.

His research program is focused on brain network dynamics in health, disease and recovery.



**Jesse Hanson, PhD**  
Chief Clinical Officer

A Neuropsychologist specializing in somatic (body-centred) psychology and holistic healing, Jesse holds a master's and a PhD in clinical psychology, and has 10 years' experience at Passages Malibu, a world-renowned luxury treatment centre in the holistic health field built around multi-faceted treatment with a team approach.



**Carmen Littlejohn, MA**  
Clinical Advisor

Carmen holds a master's degree in clinical and somatic psychology and a master's degree in spiritual psychology. Carmen is a certified member of the Canadian Counselling and Psychotherapy Association (CCC). She also holds a bachelor's degree in kinesiology and physical therapy.



**Donald Currie, RP**  
Clinical Director,  
Algonquin Highlands

A registered psychotherapist with 19 years of experience, Donald was a core team member of Helix Healthcare, a clinic specializing in addiction and mental health. His clinical work focuses on healing through somatic and trauma therapies that are evidence-based and supported by neuroscience research.

# Board of Directors



**David Heden**  
Co-founder +  
Chairperson

David started his career at 17 years old as a research analyst with Toronto’s K2 Investment Management Inc., where he eventually became managing partner. He then founded HGC Investment Management Inc., best known for managing more than \$1 billion in its HGC fund. In 2020, he founded 5D World, an impact investment firm dedicated to the progression of human consciousness.



**Gerrard Schmid**  
Board Member

A seasoned public company CEO and Board Member with experience leading business and digital transformations across global technology solution providers, Gerrard is currently CEO of Diebold Nixdorf, with responsibility for operating revenues of approximately \$4 billion and 23,000 employees across more than 60 countries.



**Alexander Somjen**  
Board Member

Alex has extensive experience serving as an officer and director of publicly listed and privately held companies across a broad range of sectors including technology, health care and cannabis. Alex is currently CEO of Origin Therapeutics, an investment company focused on investing in the psychedelics sector.



**Paul Crilly**  
Board Member

Paul has extensive experience over the past 25 years facilitating growth in early-stage companies. Paul has previously served as CFO with public and private companies, and has coordinated numerous equity financings, mergers and acquisitions across diverse industries, including energy and technology.



**Aaron David**  
Board Member

Aaron is the Founder and President of Owl Capital Investments, a privately held real estate firm focusing on investments in sustainable land. Aaron is also the Founder and President of Bluebird Properties Ltd., a commercial real estate asset management company.

## Management Team on Board of Directors:

Christopher Dawson  
Andrew Galloway

# Advisory Board



## **Gabor Maté, MD, CM**

A retired physician and author, Gabor spent more than three decades as a practising physician and, along the way, wrote four bestselling books published in over 25 languages. His extensive clinical experience encompasses stress and health, in-depth work with addiction, mind-body unity, child development and trauma.



## **Dr. Gregory Damato, PhD**

Gregory holds a bachelor's, a master's and a research doctorate in psychology, as well as a graduate diploma in science. He is the creator of The SuperHero Deep Transformation program in Costa Rica, which works to alter deeply held beliefs while symbiotically balancing the mind, body, spirit and emotions.



## **Anwar Mekhayech**

Anwar is a Principal and Founding Partner at the design studio DesignAgency, with locations in Toronto, Barcelona, Los Angeles and Washington, D.C., specializing in creative direction and strategy, brand development and interior design. Anwar has more than 20 years' experience in the hospitality space, working with boutique lifestyle brands and large multinational companies.



## **Dawn Martin, PhD**

Dawn holds a PhD in curriculum, teaching and learning from the University of Toronto, a Master of Education with a health specialization from OISE/the University of Toronto, and a Master of Social Work from Wilfrid Laurier University. Dawn is a Registered Social Worker with over 25 years' experience as an Educational Consultant with the Faculty of Medicine at the University of Toronto.



## **Jonathan Goldman**

Jonathan is President and Co-owner of Stafford Developments, a diversified private property development company that carries out land development, construction and property management. Stafford has deployed over \$1 billion of equity capital, with current managed assets of over \$2 billion on behalf of investors.



## **Dr. Rakesh Jetly, OMM, CD, MD, FRCP**

Rakesh is an internationally recognized thought leader in the areas of military and veteran mental health, suicide prevention and post-traumatic stress disorder. In 2021 he retired as the Chief of Psychiatry for the Canadian Armed Forces. His research includes dozens of studies ranging from understanding the biological underpinnings of mental illness to precision/personalized medicine. Dr. Jetly has published more than 80 peer-reviewed articles and book chapters and currently holds various advisory positions and is the Chief Medical Officer of Mydecine Innovation Group, overseeing development and clinical trials involving psychedelics.



## **Dr. Robert McMaster**

Robert is a Forensic Psychiatrist with a diverse practice, primarily within the field of addiction medicine. He works at CAMH, primarily with patients who carry severe and persistent mental health diagnoses. He also performs independent medical assessments and is actively involved in outreach psychiatry.



## **Dr. Johnathan Flores**

Johnathan is a Physician, Researcher, Psychedelic Therapist, Intuitive Coach, Music Therapist, Reiki Master and Biz Mentor who bases his professional and personal development on Andean–Amazonian medicinal plants.

# Statutory Rights of Action

In certain circumstances investors resident in certain provinces of Canada, are provided with a remedy for rescission or damages, or both, in addition to any other right they may have at law, where a presentation and any amendment to it contains a misrepresentation. Where used herein, “misrepresentation” means an untrue statement of a material fact or an omission to state a material fact that is required to be stated or that is necessary to make any statement not misleading in light of the circumstances in which it was made. These remedies, or notice with respect to these remedies, must be exercised or delivered, as the case may be, by the purchaser within the time limits prescribed by applicable securities legislation.

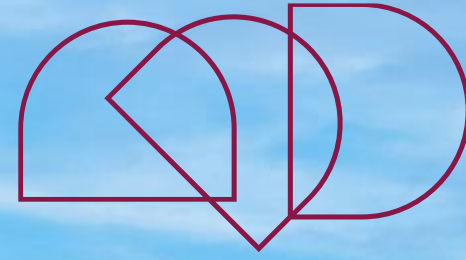
The following summary is subject to the express provisions of the applicable securities laws, regulations and rules, and reference is made thereto for the complete text of such provisions. Such provisions may contain limitations and statutory defenses not described here on which the Company and other applicable parties may rely. Purchasers should refer to the applicable provisions of the securities legislation of their province for the particulars of these rights or consult with a legal adviser.

The following is a summary of rights of rescission or damages, or both, available to investors resident in the province of Ontario. If there is a misrepresentation herein and you are a purchaser under securities legislation in Ontario, you have, without regard to whether you relied upon the misrepresentation, a statutory right of action for damages, or while still the owner of the securities, for rescission against the Company. This statutory right of action is subject to the following: (a) if you elect to exercise the right of action for rescission, you will have no right of action for damages against the Company; (b) no action shall be commenced to enforce a right of action for rescission after 180 days from the date of the transaction that gave rise to the cause of action; (c) no action shall be commenced to enforce a right of action for damages after the earlier of (i) 180 days after you first had knowledge of the facts giving rise to the cause of action and (ii) three years after the date of the transaction that gave rise to the cause of action; (d) the Company will not be liable if it proves that you purchased the securities with knowledge of the misrepresentation; (e) in the case of an action for damages, the Company will not be liable for all or any portion of the damages that it proves do not represent the depreciation in value of the securities as a result of the misrepresentations; and (f) in no case will the amount recoverable in such action exceed the price at which the securities were sold to you. The foregoing is a summary only and is subject to the express provisions of the Securities Act (Ontario), and the rules, regulations and other instruments thereunder, and reference is made to the complete text of such provisions contained therein. Such provisions may contain limitations and statutory defenses on which the Company may rely.

The statutory right of action described above is in addition to and without derogation from any other right or remedy at law.

## **Resale Restrictions.**

The securities described herein will be offered on a private placement basis in reliance upon prospectus exemptions under the Securities Act (Ontario) and the rules, regulations and other instruments thereunder. Resale of the securities offered hereby will be subject to restrictions under the applicable securities legislation of the seller and the purchaser, which will vary depending on the relevant jurisdiction. Generally, such securities may be resold only pursuant to an exemption from the prospectus requirements of applicable securities legislation or pursuant to an exemption order granted by appropriate securities regulatory authorities.



**DIMENSIONS**

**Thank You**

[TFOSTER@DIMENSIONSRETREATS.COM](mailto:TFOSTER@DIMENSIONSRETREATS.COM)  
[DIMENSIONSRETREATS.COM](https://DIMENSIONSRETREATS.COM)